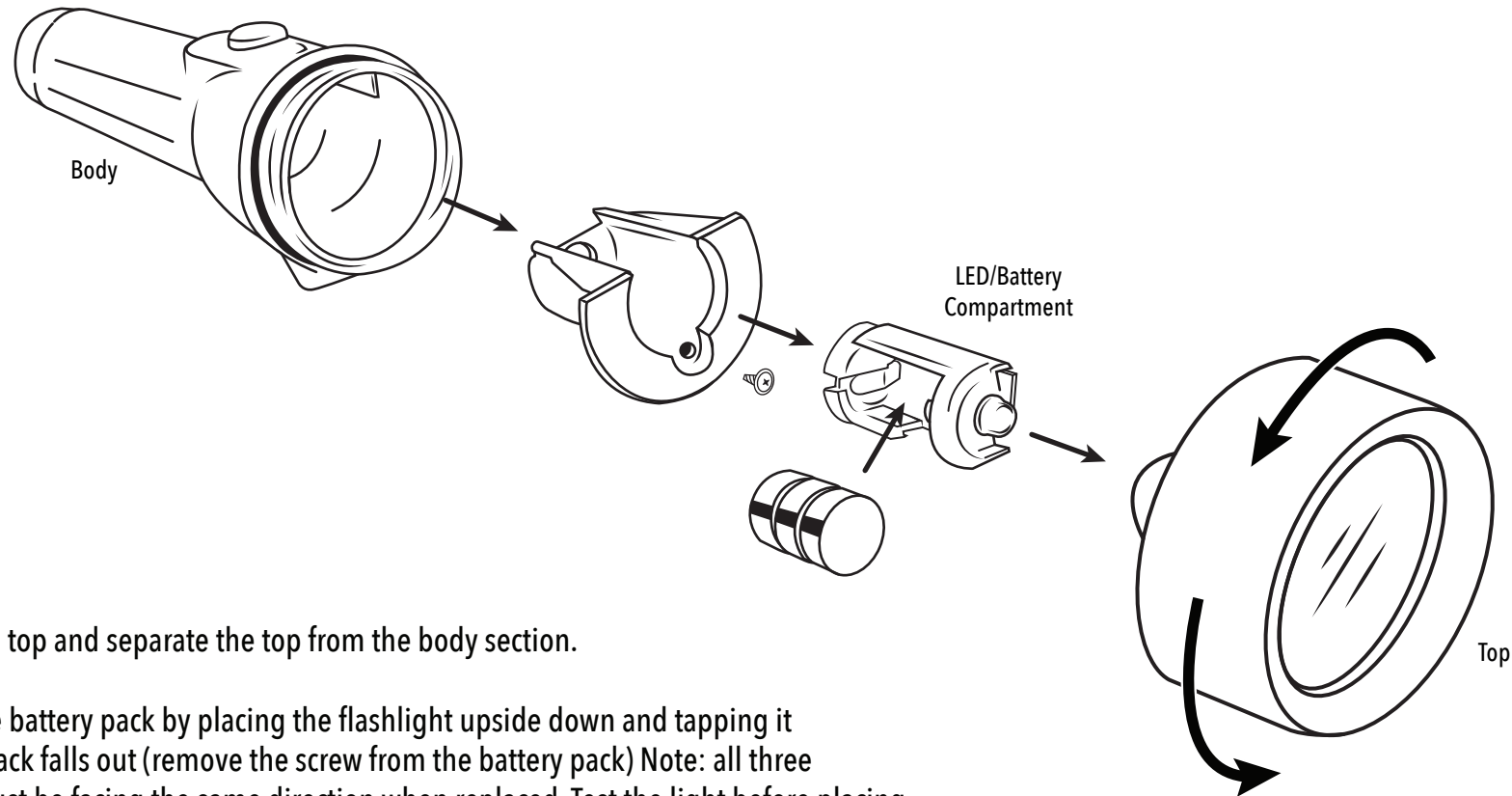




Glow Mini Flashlight Battery Replacement

Uses Battery Type: 3 x LR44 / AG13

For Model/Part#:
41-3733
LG124



1. Twist off the top and separate the top from the body section.
2. Remove the battery pack by placing the flashlight upside down and tapping it so battery pack falls out (remove the screw from the battery pack) Note: all three batteries must be facing the same direction when replaced. Test the light before placing the battery pack back in. If it does not light up, face the batteries in the other direction.
3. After replacing batteries, install the battery pack with the circuit side lined up with the on/off button on the body. Slide in and twist on the top.